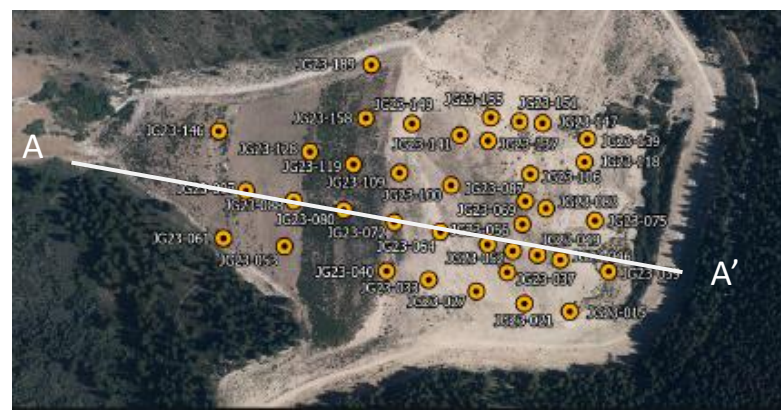
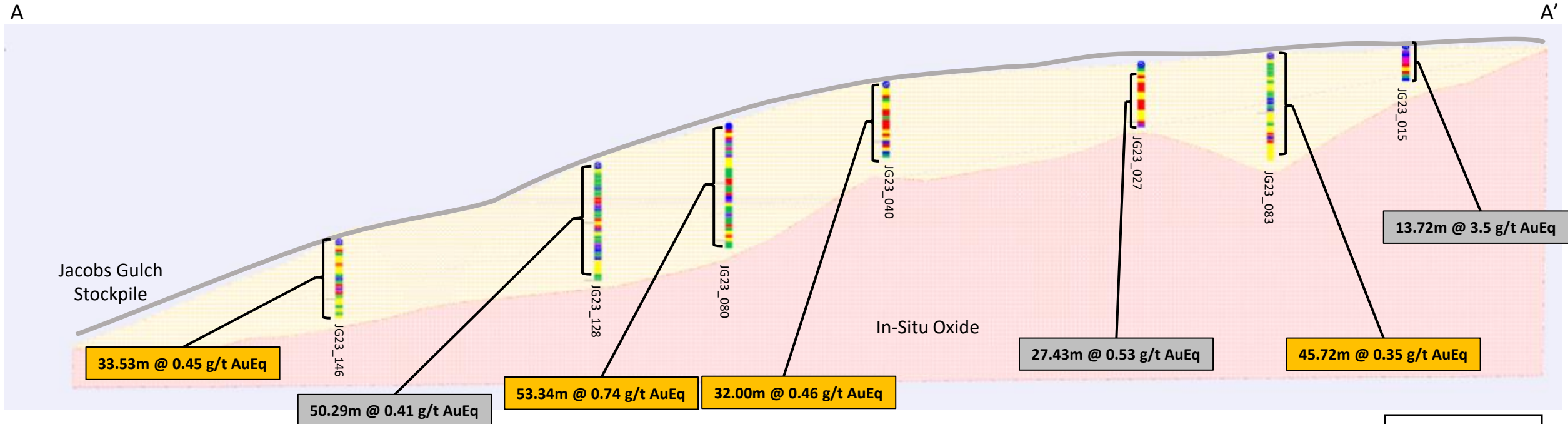
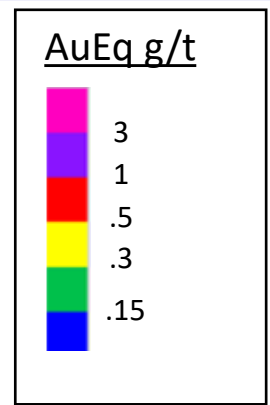


Jacobs Gulch Stockpile Cross Section: Looking North-Northeast^{1,2,3}



- Current press release
- Previous press release⁴



- (1) Downhole thickness is true thickness.
- (2) Intervals reported are uncapped.
- (3) AuEq = g/t Au + (g/t Ag ÷ 77.70). Rounding may cause minor discrepancies in the AuEq column.
- (4) Please refer to Company news releases from December 2022-July 2023