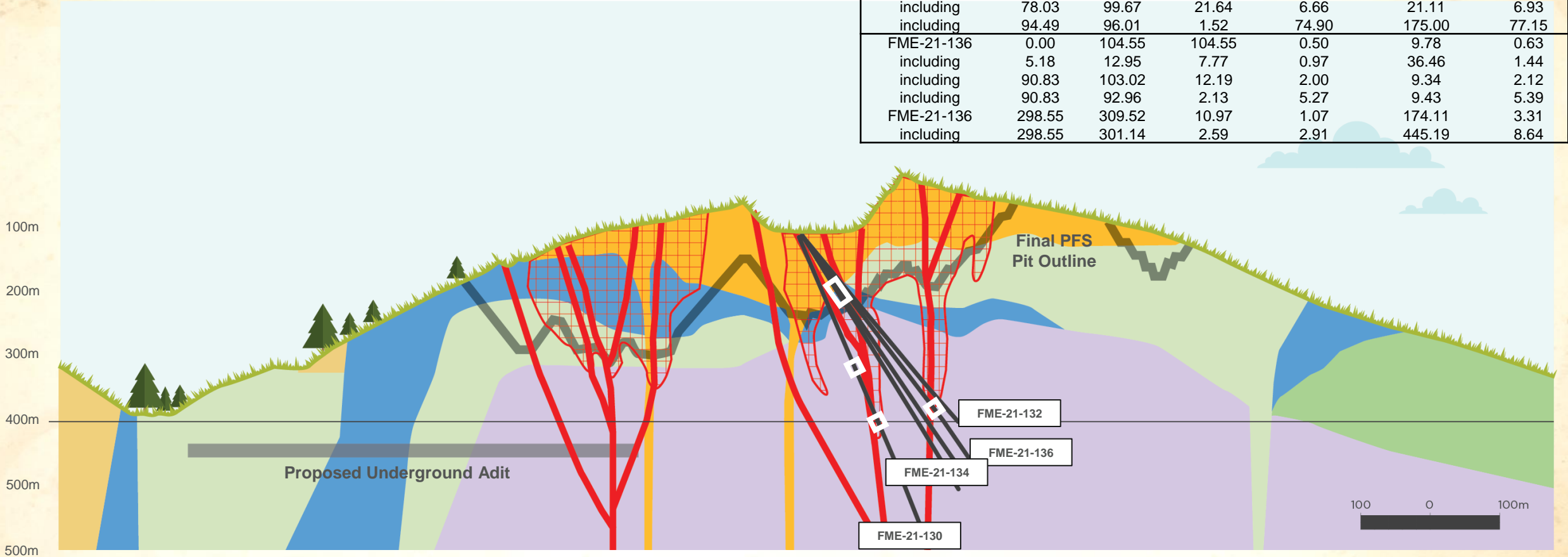


Florida Mountain Cross Section

A:A (Looking North)

| Drill Hole | From (m) | To (m) | Interval (m) | g/t Au | g/t Ag | g/t AuEq |
|------------|----------|--------|--------------|--------|--------|----------|
| FME-21-130 | 1.68 | 92.66 | 90.98 | 1.79 | 45.17 | 2.37 |
| including | 3.20 | 9.45 | 6.25 | 0.15 | 155.52 | 2.16 |
| including | 15.70 | 28.35 | 12.65 | 9.32 | 174.41 | 11.57 |
| including | 77.11 | 92.66 | 15.55 | 1.86 | 18.84 | 2.10 |
| FME-21-130 | 191.72 | 193.24 | 1.52 | 0.67 | 111.00 | 2.10 |
| FME-21-130 | 267.31 | 268.04 | 0.73 | 2.73 | 538.00 | 9.65 |
| FME-21-132 | 0.00 | 110.64 | 110.64 | 0.54 | 10.36 | 0.68 |
| FME-21-134 | 2.13 | 99.67 | 97.54 | 1.65 | 14.24 | 1.83 |
| including | 2.13 | 9.14 | 7.01 | 0.40 | 57.88 | 1.14 |
| including | 78.03 | 99.67 | 21.64 | 6.66 | 21.11 | 6.93 |
| including | 94.49 | 96.01 | 1.52 | 74.90 | 175.00 | 77.15 |
| FME-21-136 | 0.00 | 104.55 | 104.55 | 0.50 | 9.78 | 0.63 |
| including | 5.18 | 12.95 | 7.77 | 0.97 | 36.46 | 1.44 |
| including | 90.83 | 103.02 | 12.19 | 2.00 | 9.34 | 2.12 |
| including | 90.83 | 92.96 | 2.13 | 5.27 | 9.43 | 5.39 |
| FME-21-136 | 298.55 | 309.52 | 10.97 | 1.07 | 174.11 | 3.31 |
| including | 298.55 | 301.14 | 2.59 | 2.91 | 445.19 | 8.64 |



High-grade Intercepts
 Branded Rhyolite
 Porphyritic Rhyolite
 Tuff Breccia
 Quartz Latite
 Basalt
 Granite
 Stockwork Mineralization
 High-Grade Veins
 Drill Trace

(1) Downhole thickness; true width varies depending on drill hole dip; most drill holes are aimed at intersecting the vein structures close to perpendicular therefore true widths are close to downhole widths (approximately 70% conversion ratio)
 (2) Gold equivalent = $g \text{ Au/t} + (g \text{ Ag/t} \div 77.70)$
 (3) Intervals reported are uncapped