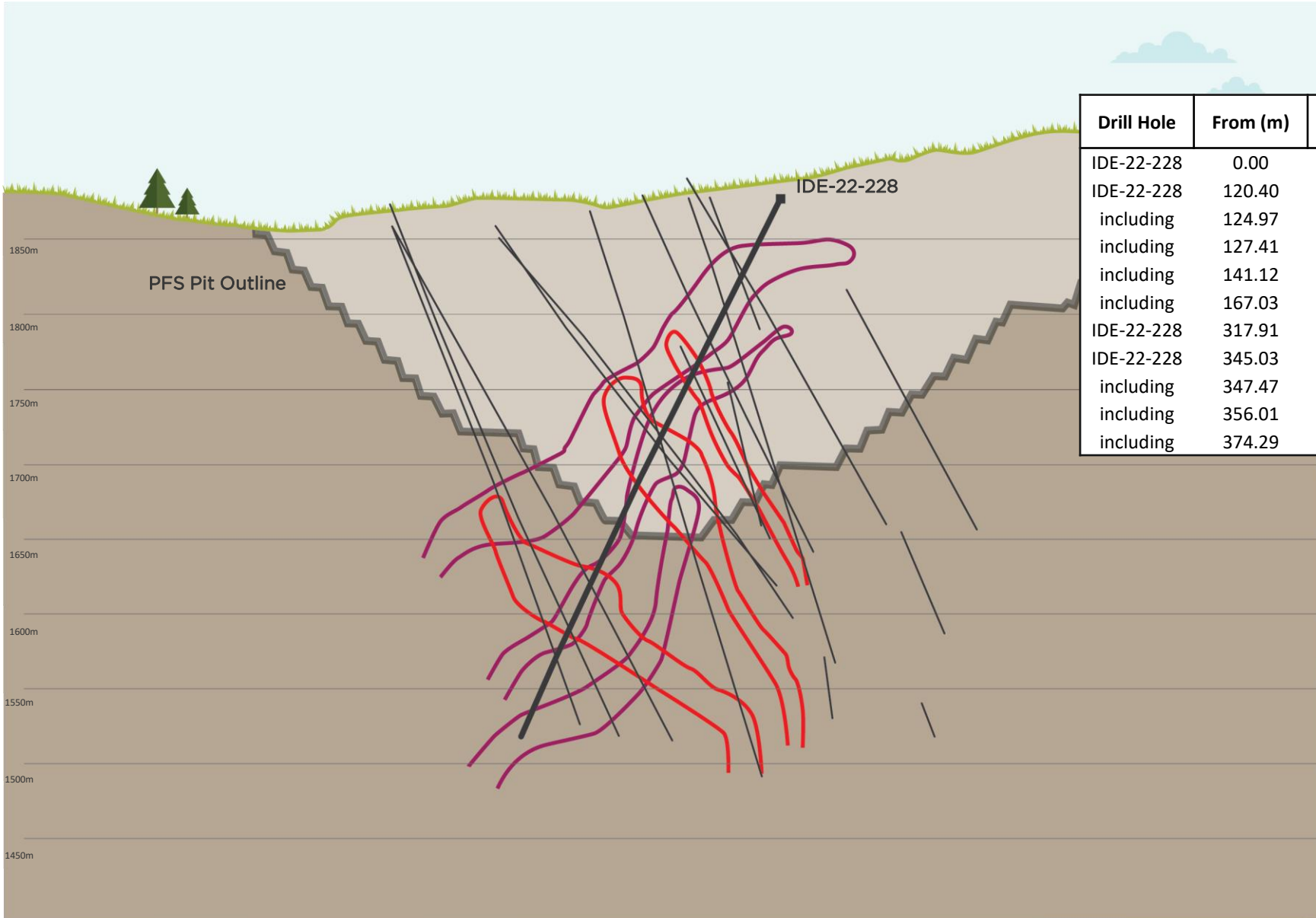





Cross Section: Drill Hole IDE-22-228 (Looking Northwest)



Drill Hole	From (m)	To (m)	Interval (m)	g/t Au	g/t Ag	g/t AuEq
IDE-22-228	0.00	396.85	396.85	0.76	69.50	1.66
IDE-22-228	120.40	173.13	52.73	1.15	88.21	2.28
including	124.97	136.55	11.58	2.33	184.02	4.70
including	127.41	128.93	1.52	9.00	491.00	15.32
including	141.12	142.65	1.53	1.70	114.00	3.17
including	167.03	168.55	1.52	1.58	210.00	4.28
IDE-22-228	317.91	319.43	1.52	2.95	5.39	3.02
IDE-22-228	345.03	396.85	51.82	0.45	87.46	1.58
including	347.47	349.30	1.83	0.20	336.04	4.52
including	356.01	357.53	1.52	0.59	547.00	7.63
including	374.29	375.82	1.53	2.80	435.00	8.40

- (1) Downhole thickness; true width varies depending on drill hole dip; most drill holes are aimed at intersecting the vein structures close to perpendicular therefore true widths are close to downhole widths (approximately 70% conversion ratio)
- (2) Gold equivalent = $g \text{ Au/t} + (g \text{ Ag/t} \div 77.70)$
- (3) Intervals reported are uncapped

-  Vein Set Dipping Southwest
-  Vein Set Dipping Northeast
-  Drill Trace